

# Pool-in-Wharfedale Neighbourhood Area Policies Plan

## Community Facilities and Services

- CF01 Dyneley Arms Public House
- CF02 Half Moon Public House
- CF03 Old Pool Bank Village Hall
- CF04 Pool-in-Wharfedale Sports and Social Club
- CF05 Pool-in-Wharfedale Church of England Primary School
- CF06 Pool-in-Wharfedale Methodist Chapel
- CF07 Pool-in-Wharfedale Methodist Chapel Hall
- CF08 Pool-in-Wharfedale Pharmacy
- CF09 Pool-in-Wharfedale Post Office and General Store
- CF10 Pool Village Memorial Hall
- CF11 St Wilfrid's Church
- CF12 Wharfedale Court Sheltered Housing Complex
- CF13 White Hart Public House

## Employment

- ES01 Elm Nook (aka Elm House)
- ES02 Highfield
- ES03 Marton Mills
- ES04 Pool Business Park
- ES05 The Blue Barn
- ES06 Whiteley Court

## Local Green Space

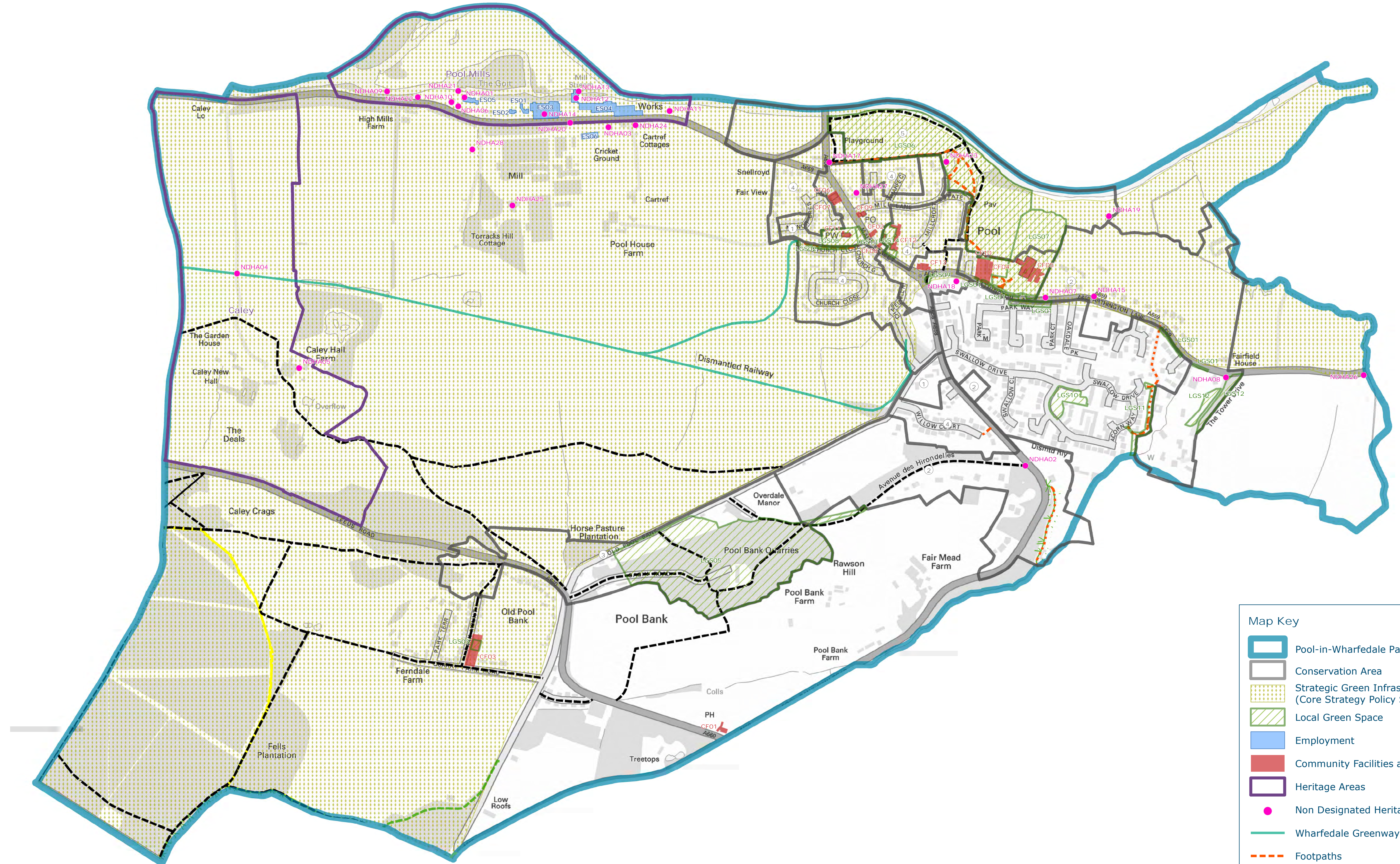
- LGS01 Arthington Lane verges (marked light green on map)
- LGS02 Church Lane
- LGS03 Old Pool Bank Children's playground
- LGS05 Pool Bank quarries
- LGS06 Pool-in-Wharfedale Riverside Park - see additional map for clarification
- LGS07 Pool-in-Wharfedale Church of England Primary School grounds
- LGS08 St Wilfrid's Churchyard
- LGS09 Stocks Hill
- LGS10 Swallow Drive greenspace
- LGS11 Swallow Drive to disused railway walkway
- LGS12 The Tower Drive
- LGS13 War Memorial Gardens
- LGS14 Wharfedale Court amenity space

## Non Designated Heritage Assets

- NDHA01 'The Rosary' (Blue Barn)
- NDHA02 Archway, Avenue des Hironnelles
- NDHA03 Braime House
- NDHA04 Caley Drive Railway Bridge
- NDHA05 Caley Hall Farm
- NDHA06 Garage, Blue Barn
- NDHA07 Gateposts, Troutbeck
- NDHA08 Gateway, Tower Drive
- NDHA09 Goat Sluice Gate
- NDHA10 High Mill Cottages
- NDHA11 Longlands Cottages
- NDHA12 Low Mill
- NDHA13 Low Mill Turbine Building and Water Turbines
- NDHA14 Marton Mills (The Paste Mill and Reel Mill)
- NDHA15 Milepost remains, Arthington Lane
- NDHA17 Old School Gatepost
- NDHA18 Outhouses, Acorn Cottages
- NDHA19 Pool Crooks Field Barn
- NDHA20 Pool Mills Tunnels
- NDHA21 Site and remains of High Mill (aka Pool Walk Mill)
- NDHA22 Site of Lime Kiln
- NDHA23 Site of Pool Corn Mill and remains
- NDHA24 The 'Cartref Complex'
- NDHA25 Torracks Hill
- NDHA26 Village Boundary Stone, Arthington Lane
- NDHA27 Wash House behind Chapel Row
- NDHA28 World War Two Air Raid Shelters, Torracks Hill 'Drive'

## Conservation Area

- Character Area 1 The Historic Core
- Character Area 2 19th Century Villas
- Character Area 3 Pool Bank Quarry
- Character Area 4 20th Century Housing
- Character Area 5 Wharfe Valley



**Map Key**

- Pool-in-Wharfedale Parish Boundary
- Conservation Area
- Strategic Green Infrastructure (Core Strategy Policy SP13)
- Local Green Space
- Employment
- Community Facilities and Services
- Heritage Areas
- Non Designated Heritage Assets
- Wharfedale Greenway
- Footpaths
- Definitive - Footpath
- Definitive - Bridleway
- Non-Definitive Footpath
- Non-Definitive Restricted Byway
- Non-Definitive Byway
- Recreational Footpath

