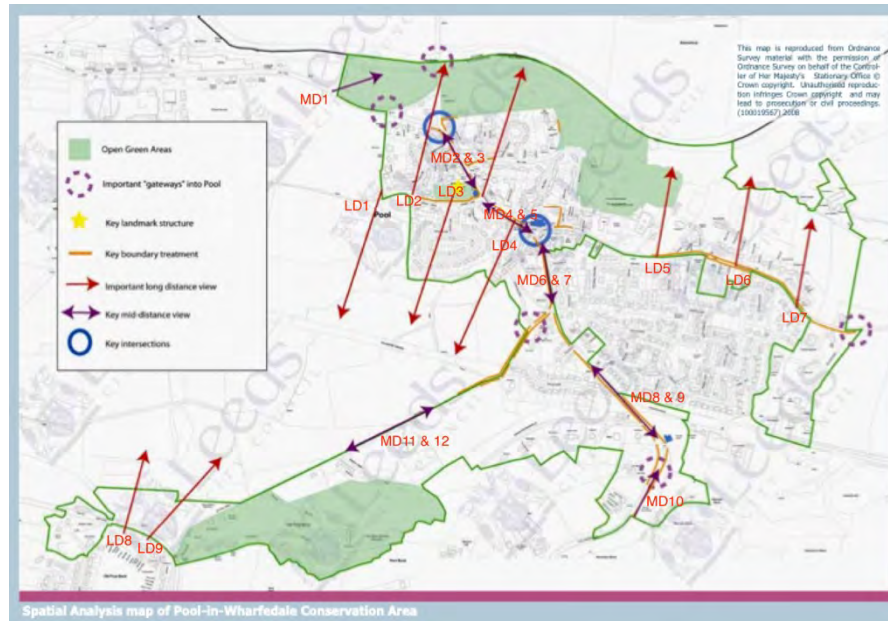


Appendix 3: Key/Important Conservation Area Views

POOL-IN-WHARFEDALE CONSERVATION AREA



CAA Important long-distance views

View LD1:-

From end of Church Close looking towards Old Pool Bank and quarry.



View LD2:-

From Old Pool Bank looking towards the bridge and gateway to Pool



View LD3:-
From St Wilfrid's Church looking SW up towards Old Pool Bank.



View LD4:-
From Wharfedale Court looking SW towards Old Pool Bank.



Views LD5, 6, 7:-
Looking NE from Arthington Lane towards the River Wharfe.



Views LD8, 9:-
Looking from Leeds Road NNE & ENE





CAA Key mid-distance views

View MD1:-

From Pool Road looking ENE towards bridge and gateway to Pool



Views MD2 & 3:-

Looking NNW & SSE along Main Street. Shell Garage to Memorial Garden stretch.





Views MD4 & 5:-

Looking NW & SE along Main Street. Memorial Garden to Arthington Lane stretch.





Views MD6 & 7:-

Looking N & S along Pool Bank New Road between Arthington Lane and Old Pool Bank.





Views MD8 & 9:-

Looking NW & SE along Pool New Road between Firs Hill Court and Old Pool Bank.



View MD10:-

Looking NE down Pool Bank New Road upper section. Looking back towards Firs Hill Court at the gateway to Pool.



View MD11 & 12:-

Looking NE & SW up and down Old Pool Bank between Sandy Lobby and Overdale Manor.

